

[dallas craigslist](#) > [dallas](#) > [for sale / wanted](#) > [farm & garden](#)[email this posting to a friend](#)

Avoid scams and fraud by dealing locally! Beware any deal involving Western Union, Moneygram, wire transfer, cashier check, money order, shipping, escrow, or any promise of transaction protection/certification/guarantee. [More info](#)

please [flag](#) with care:[miscategorized](#)[prohibited](#)[spam/overpost](#)[best of craigslist](#)

PARTING OUT: 1963 Ford 4000 Industrial Tractor (Farmers Branch / Dallas)

Date: 2010-10-18, 3:31PM CDT

Reply to: see below



PARTING OUT: 1963 Ford 4000 Industrial Tractor

4-Sp Manual Transmission: Change your Select-O-Speed Automatic to Manual 4 speed - complete change-Over back end.

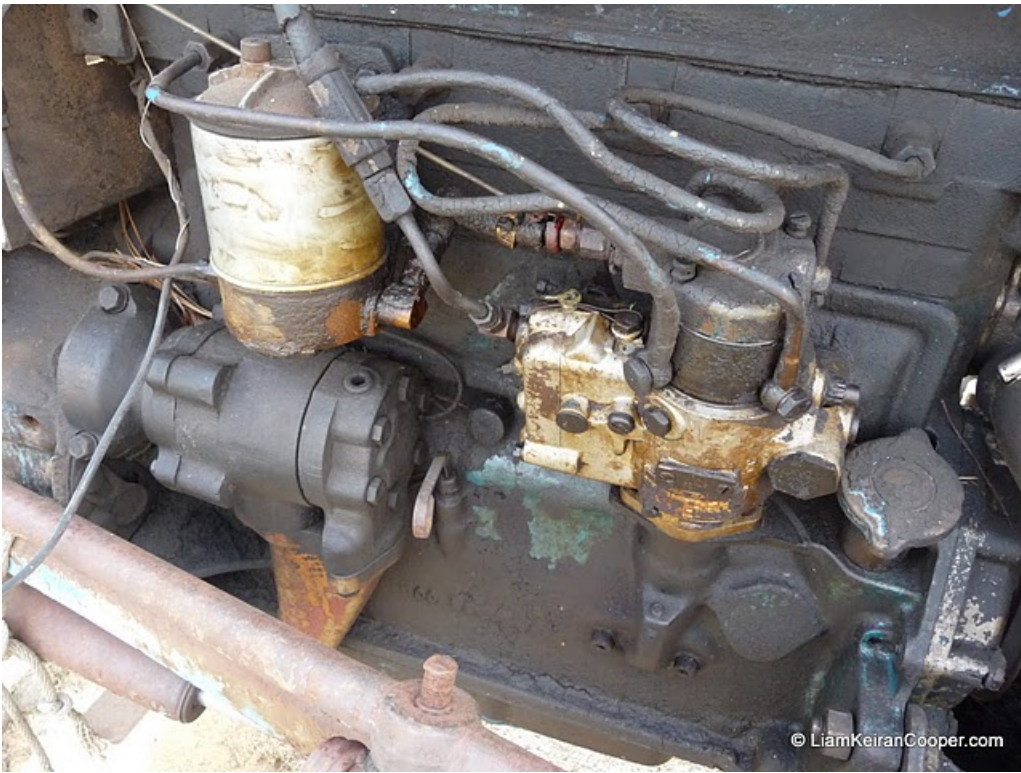
See also the ad for the front-end loader (incl controls) which FITS ALL 1953-1964 Ford Tractors (except 900 series)

Extra heavy-duty front axle - interchanges with the weaker, adjustable front axle (see pics).

CALL FREDDIE at (214) 280-3733

CLICK ON ANY OF THESE PICTURES TO SEE MORE (40 PICS TOTAL) AND ALL IN HIGH RESOLUTION - TAKEN 17 OCT 2010:







© LiamKeiranCooper.com



© LiamKeiranCooper.com



© LiamKeiranCooper.com



© LiamKeiranCooper.com



Want your own Ad to look like this?



#LKC

- Location: Farmers Branch / Dallas
- it's NOT ok to contact this poster with services or other commercial interests

PostingID: 2012934009

No contact info?

if the poster didn't include a phone number, email, or other contact info, craigslist can notify them via email.